



THE
A-TEAM

**RE/MAX
FIRST**

122 GOODWIN Place, Fort McMurray T9J1K1

MLS®#: **A2212355**

Area: **Grayling Terrace**

Listing Date: **04/16/25**

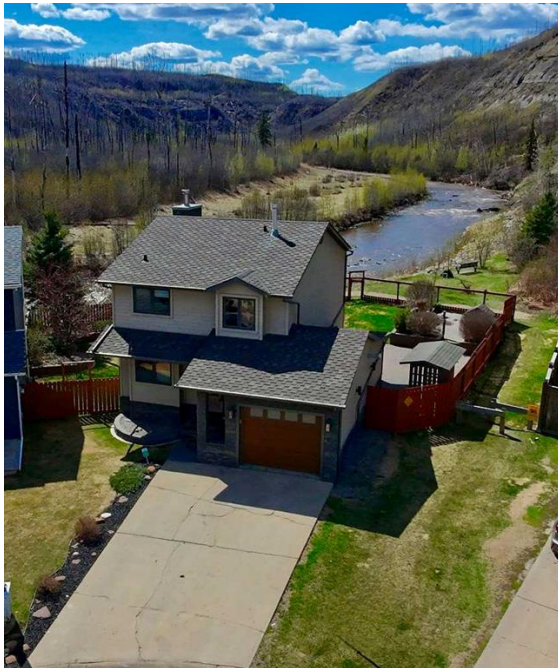
List Price: **\$599,000**

Status: **Pending**

County: **Wood Buffalo**

Change: **None**

Association: **Fort McMurray**



General Information

Prop Type:

Residential

Sub Type:

Detached

City/Town:

Fort McMurray

Year Built:

1982

Lot Information

Lot Sz Ar:

4,937 sqft

Lot Shape:

Finished Floor Area

Abv Sqft:

1,435

Low Sqft:

Ttl Sqft:

1,435

DOM

80

Layout

Beds:

4 (3 1)

Baths:

2.5 (2 1)

Style:

2 Storey

Parking

Ttl Park:

3

Garage Sz:

1

Access:

Lot Feat:

Park Feat:

**Back Yard,Backs on to Park/Green Space,City Lot,Cul-De-Sac,Landscaped,Lawn,See Remarks,Views
Single Garage Detached**

Utilities and Features

Roof:

Shingle

Heating:

Fireplace(s),Forced Air

Sewer:

Ext Feat:

Private Yard

Construction:

See Remarks

Flooring:

Ceramic Tile,Hardwood

Water Source:

Fnd/Bsmt:

Poured Concrete

Kitchen Appl:

Built-In Oven,Built-In Range,Dishwasher,Microwave,Refrigerator,See Remarks,Washer/Dryer,Wine Refrigerator

Int Feat:

Bookcases,Built-in Features,Granite Counters,Jettied Tub,Kitchen Island,Open Floorplan,See Remarks

Utilities:

Room Information

Room	Level	Dimensions	Room	Level	Dimensions
2pc Bathroom	Main		4pc Bathroom	Second	
4pc Ensuite bath	Second		Bedroom - Primary	Second	14`10" x 15`1"
Bedroom	Second	11`2" x 8`9"	Bedroom	Second	13`8" x 9`3"
Bedroom	Basement	10`0" x 9`0"	Eat in Kitchen	Main	14`10" x 11`3"
Living Room	Main	20`9" x 15`3"	Family Room	Basement	19`3" x 10`7"
Legal/Tax/Financial					

Title:	Zoning:
Fee Simple	R1S
Legal Desc:	8021827

Remarks

Pub Rmks:	<p>Breathtaking river views! This exquisite property offers 4 bedrooms and 2.5 baths. Starting off, the kitchen is a dream W/ led under cabinet lighting, custom maple cabinetry, soft close doors, quartz countertops, upgraded appliances which include bar fridge, induction cook top, double oven, dishwasher behind door panel, & an extra-large island w/ track pendant lighting and extra seating. Dining area offers, hidden slide out maple dining table seating 6 comfortably. Livingroom features, Regency FP90 wood burning fireplace delivering 70,000 BTU of high efficiency heat with temperature sensitive blower/fan and maple mantel with custom built in maple cabinetry. Next in the living room is an under window fireside seating with storage. Finishing the main floor, is a half bath W/ floating tigerwood vanity W/ quartz countertop, counter to ceiling backsplash w/ mother of pearl inlay detail with custom framed mirror & maple sliding door with designed glass by Flux Glass on an oil rubbed bronze rail system. Let's go upstairs! The stair rail and banister system were custom designed & includes Maple handrails with glass inserts by Flux. 2nd floor offers, 3 bedrms, w/ natural cherry hardwood flooring, hemlock trim, solid wood doors with sound proofing, built in closets and lights on dimmers. The PRIMARY BEDROOM, wood door, 10' double rail four door closet, hidden motorized blind, black out roller blind and infused light roller blind, trimmed with hardwood flooring and hemlock trim. The ensuite complete with, marble & travertine flooring and wall covering, cement board and kerdi wrap used in all areas behind the tile, Maple floating custom cabinetry, w/ Swarovski Crystal faucet knobs, electric in floor heating, (also in the main bathroom) hardwired heated towel rail, BainUltra- Elegancia 6642 double air jet tub with heated back rest and chromotherapy lights and self clean out. Glass chandelier over the tub, 5' corner glass shower with body jets. The window in this bedroom is picturesque of the river view...yes wake up to river view and listen to the sounds of water! THE BASEMENT, offering & family room and bedroom w/, above code insulation in all walls including IKO Enerfoil R6.2 & batt insulation in framing, subflooring with upgraded laminate, Regency P36 30,000 BTU natural gas fireplace, pot lights, in ceiling surround speakers and under stairs storage. Utility room has heat exchanger, HE HWT and furnace and a industrial sink/sprayer.! Lets talk exterior, Lifetime warranty premium shingles with Amourguard ice and water protection, Hardiplank concrete siding, triple glazed windows, deck built w/ Brazilian hardwood, wood shed, flower beds with power, NGas hookup for BBQ. The garage has a 30,000BTU Lennox heater, mezzanine storage system, & workshop cabinetry. (Opportunity to have larger shop space). South facing back yard with uninterrupted stunning views of the River and Boreal Forest w/ wildlife and sunsets of a lifetime! Call today for a tour of this one-of-a-kind home!</p>
Inclusions:	<p>Fridge, convection microwave/oven, convection oven, hood fan, dishwasher, induction stove top, wine fridge, television in kitchen, SONOS sound system (App controlled), ceiling speakers, motorized window blinds with remote, washer, dryer, s/s industrial sink and sprayer in utility rm, wood shed, storage systems in garage, garage heater, (Central Air unit , "AS IS")</p>
Property Listed By:	RE/MAX Connect

TO VIEW THIS PROPERTY WITH AN A-TEAM BUYER'S AGENT PLEASE CONTACT (780) 804-4800



